




PhotoPrint 12 Manual for Installation

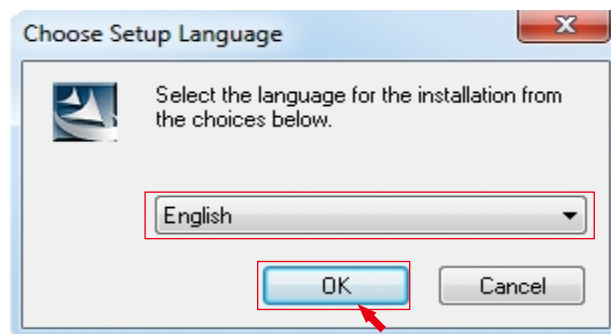
★★★For program installation, please exit all anti-virus software and other protection software, because the installation process will modify system files and registry options. If there is anti-virus software that will prevent the installation, it is likely to cause incomplete installation or installation failure. Turn on antivirus and other protection software

1. Install No.1.exe (the dialog box will not appear, just flash it)
2. Install No.2.exe
3. Install No.3.exe

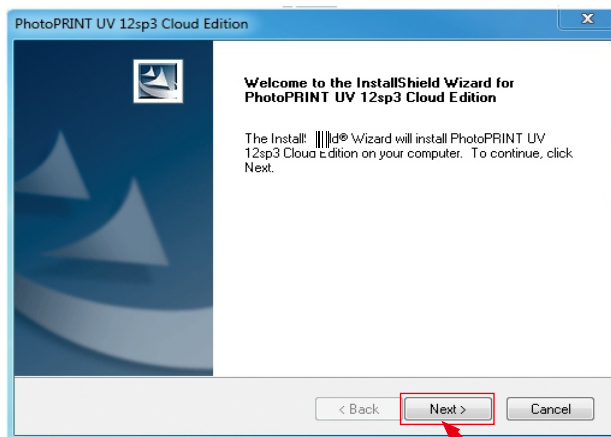
Please install in the order of 1, 2 and 3 above, and keep the path of steps 2 and 3 consistent, so that the program can be used in the network environment

XX: \ Program Files (x86) \ SAi \ SAi Production Suite Cloud
It is best to add trust to the XX: \ Program Files (x86) \ SAi \ SAi Production Suite Cloud folder to avoid false positives, XX indicates your drive letter

- 1、Plug the USB flash disk into the USB port of PC.
- 2、Find the folder  ,double click to open it.
- 3、Run the application  (the dialog box will not appear, just flash it).
- 4、Run the application 
- 5、dialong box,Select the language.
- 6、Click OK .



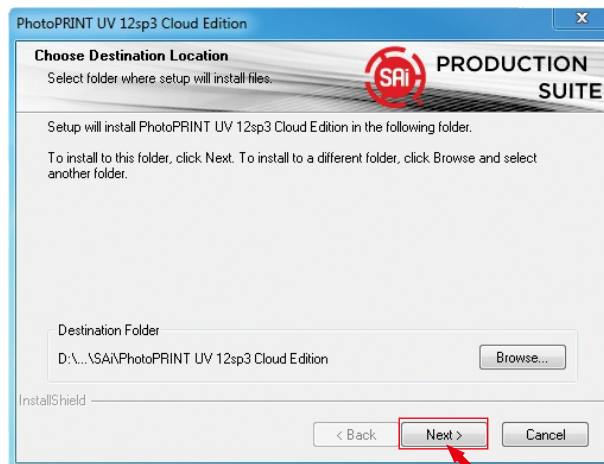
- 7、Click next.



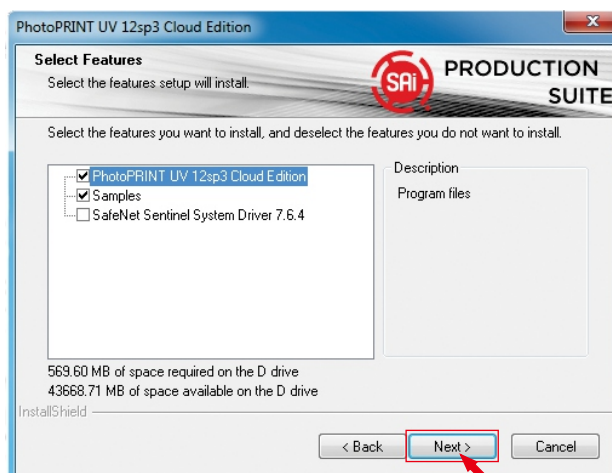
8、Accept the clause and click next.



9、Select target folder and click next.



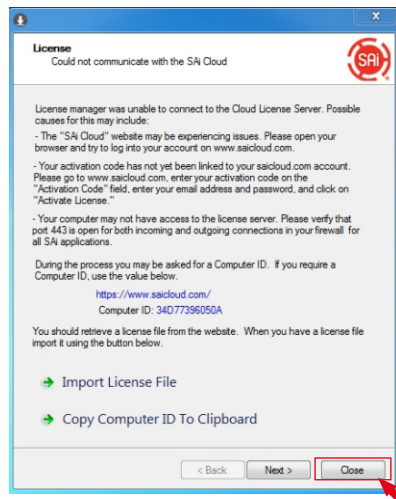
10、Select the installation files and click next.



11、Click next.



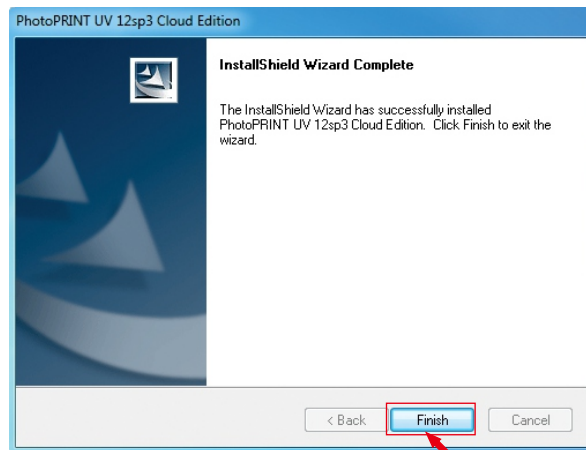
12、Click Close.



13、Click OK .

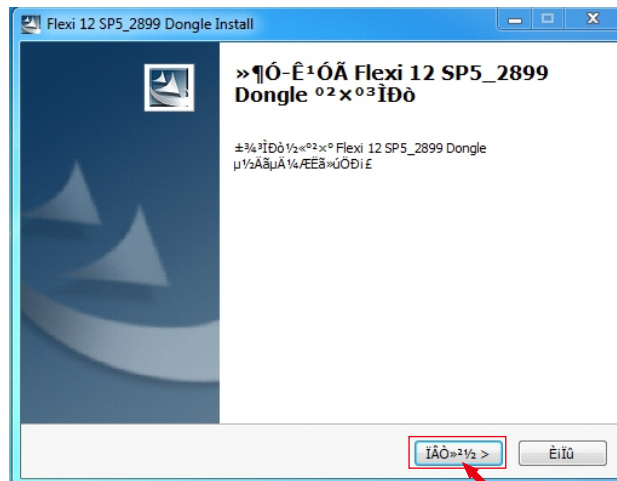


14、Click Finish to complete the installation.

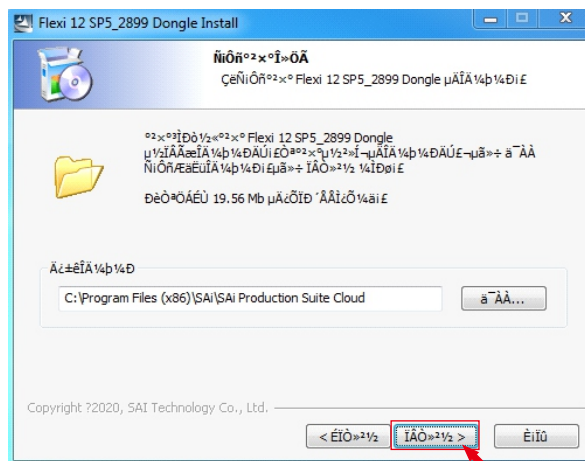


15、Plug the dongle into the USB port of PC.

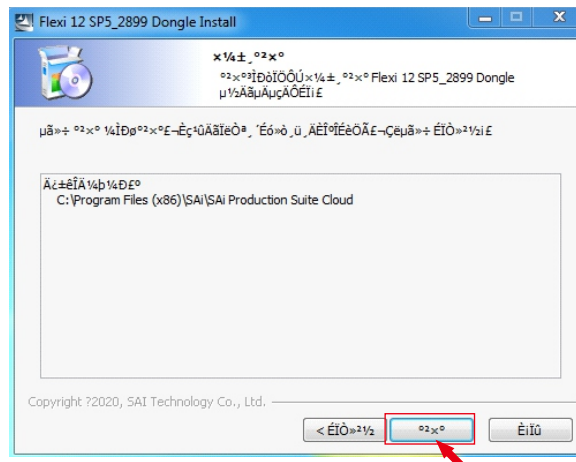
16、Run the application  No.3 . Click next.



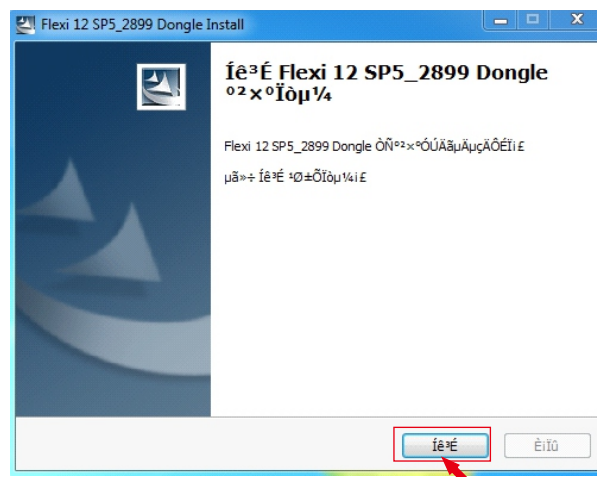
17、Accept the clause and click next.



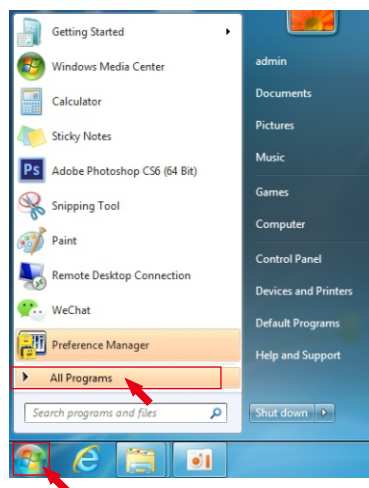
17、Click Install.



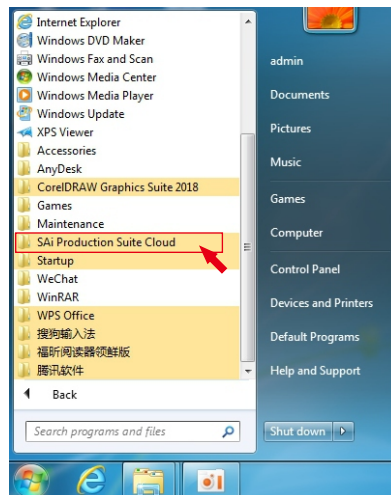
18、Click Finish to complete the installation.



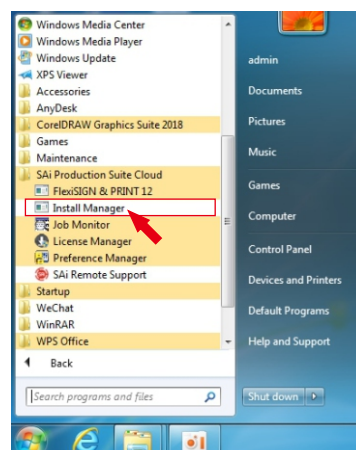
19、Click on the Start menu and select all programs.



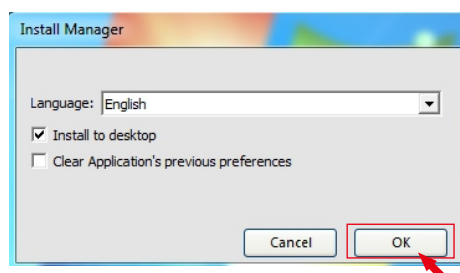
21、Click SAI Production Suite Cloud.




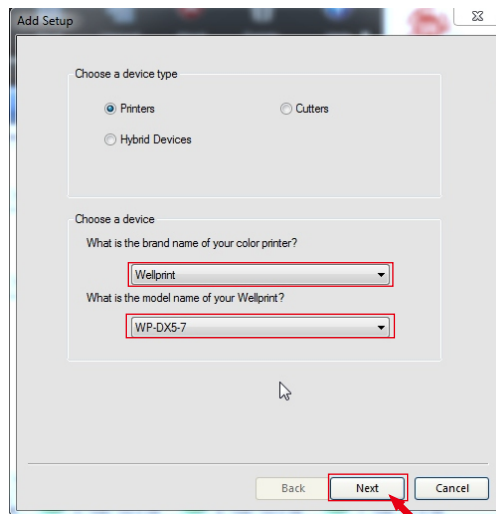
22、Click Install Manager.



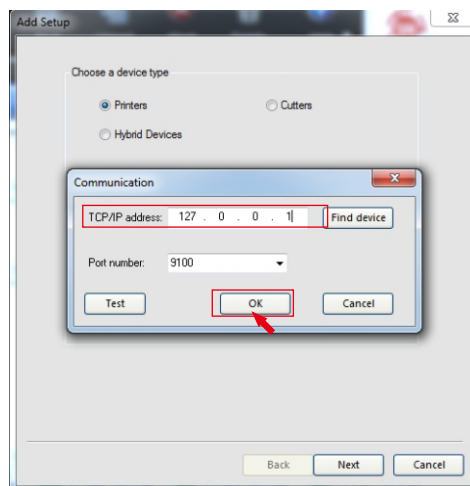
23、Click OK .



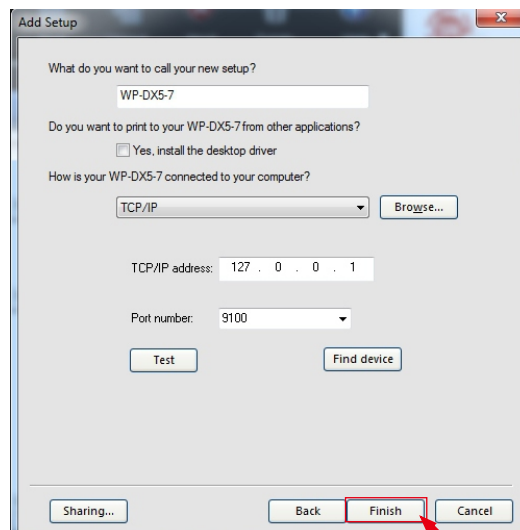
- 24、 There will be 2 shortcut shown on the desktop, double click to run the  .
- 25、 The window shown as follow, select the type as 'WP-DX5-7', click next.



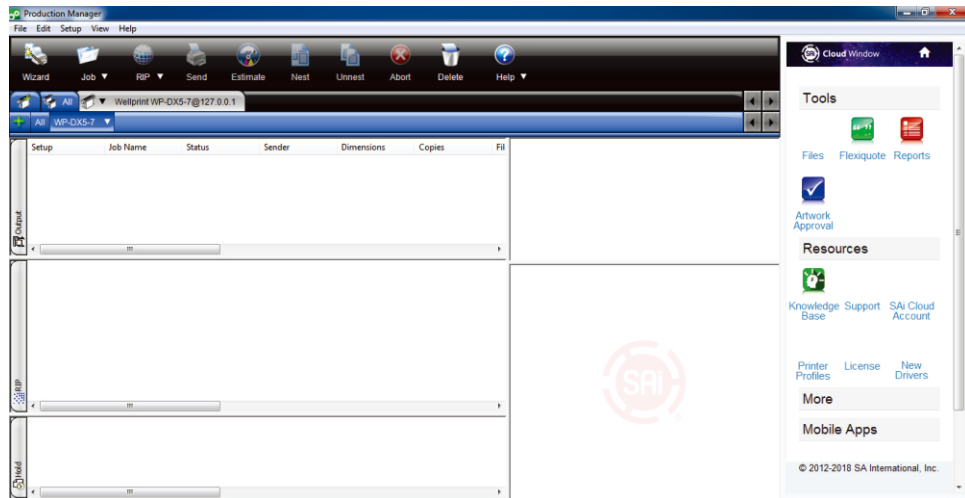
- 26、 Setup the (TCP/IP) to 127. 0. 0. 1 .



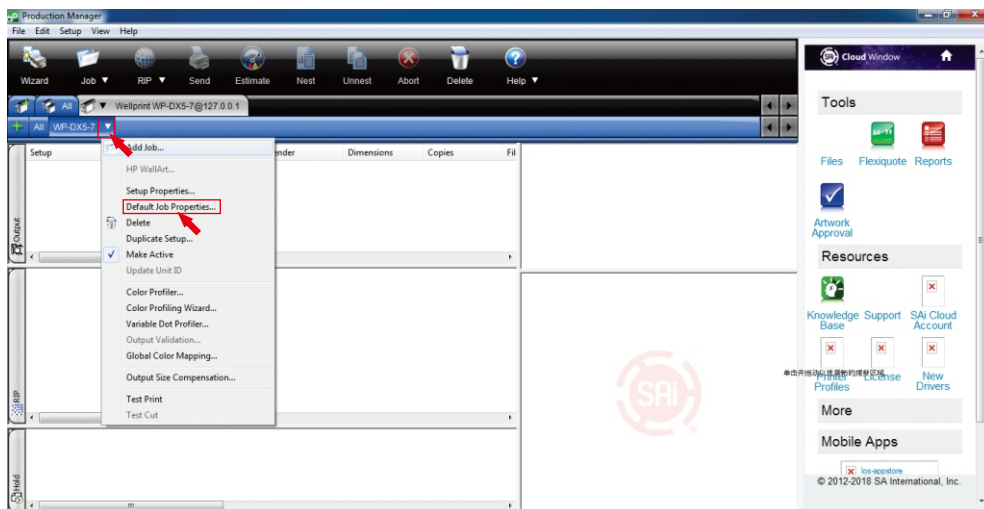
- 27、 Click “ok” will show the window as follow.



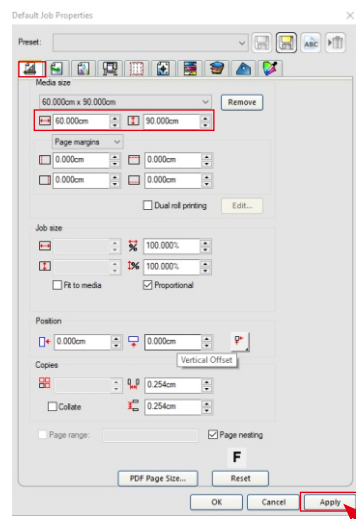
28、A dialog box shown,means installation complete successfully.




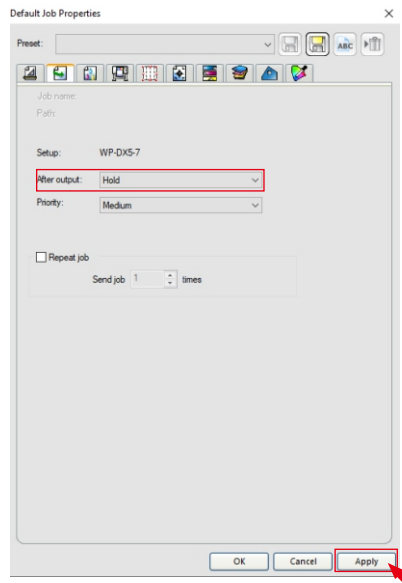
29、Click the menu WP-DX5-7 ,to setup the default Job properties.



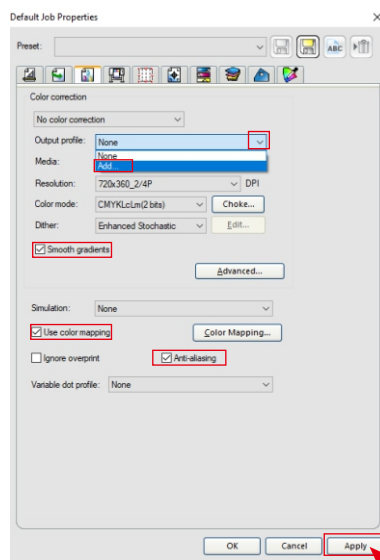
30、In the parameter setup page,Set the width =60cm,and height =90cm.



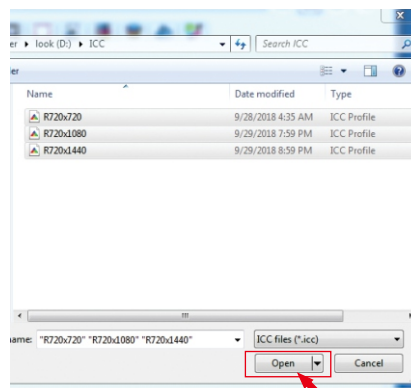
31、 In the parameter setup page,click             



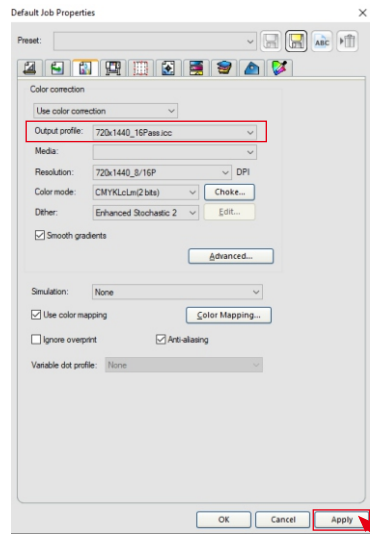
32、 In the parameter setup page,click              ,Add the ICC curve through the output profile,Check other options.




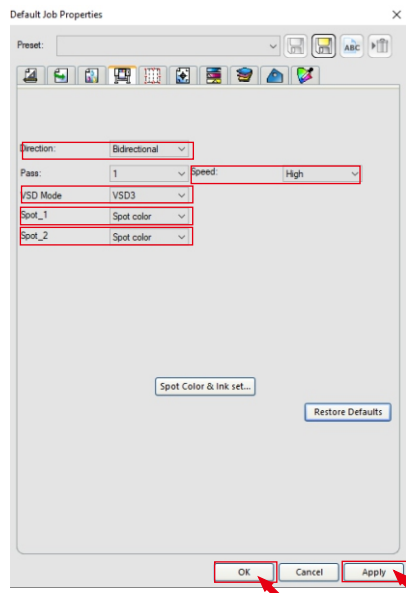
33、 The ICC curve files will be saved in the USB flash disk,select all the files.



34、The following dialog box shown means the ICC curve installation complete.



35、In the default parameter page,click  .



36、After all the setup finish,click "apply",then click "ok",to complete the default parameter